

# Grooming Equipment Maintenance



# Maintenance Topics

- Daily Maintenance

- Tub Maintenance
- Waste Tank Maintenance
- Fresh Water Tank Fill
- Bathing Beauty Maintenance
- Shoreline Charging/Inspect Shoreline Breaker Box
- Clean the grooming area

- Weekly Maintenance

- Evaporator Maintenance
- High-Velocity Dryer Maintenance
- HairVac Maintenance

- Monthly Maintenance

- Xantrex Inverter Maintenance
- Evaporator Maintenance
- Condensing Fan Maintenance
- Bathing Beauty Maintenance
- Fluff Dryer Maintenance
- Grooming Table Maintenance
- Roof Vent Maintenance
- Waste Tank Maintenance
- Lead Acid Battery Maintenance
- HairVac Maintenance



# Maintenance Topics

- [Quarterly Maintenance](#)
  - [Xantrex Inverter Maintenance](#)
  - [Fresh Water Tank Maintenance](#)
  - [Space Heater Maintenance](#)
  - [Coolant Hose Connection Maintenance](#)
  - [Heat Exchanger Maintenance](#)





# Daily Maintenance

# Tub Maintenance

The Tub should be cleaned daily with mild soap and water or a stainless-steel cleaner. Dawn Power Wash is excellent at breaking down dog dander. Just spray, let soak for a few minutes, and rinse or wipe down with a microfiber or similar cloth. Do not use any type of Metal brush, soft bristle brushes would be fine. Only use a soft cleaning cloth or magic eraser.



# 45-gallon Waste Tank Maintenance

The Waste tank should be emptied at the end of each workday to prevent foul odors and scum from building up in the tank.

Washing your tub with a sanitizer, like 256, and flushing that down the drain after the waste tank is empty. Prevent any water that is left behind from getting soured.

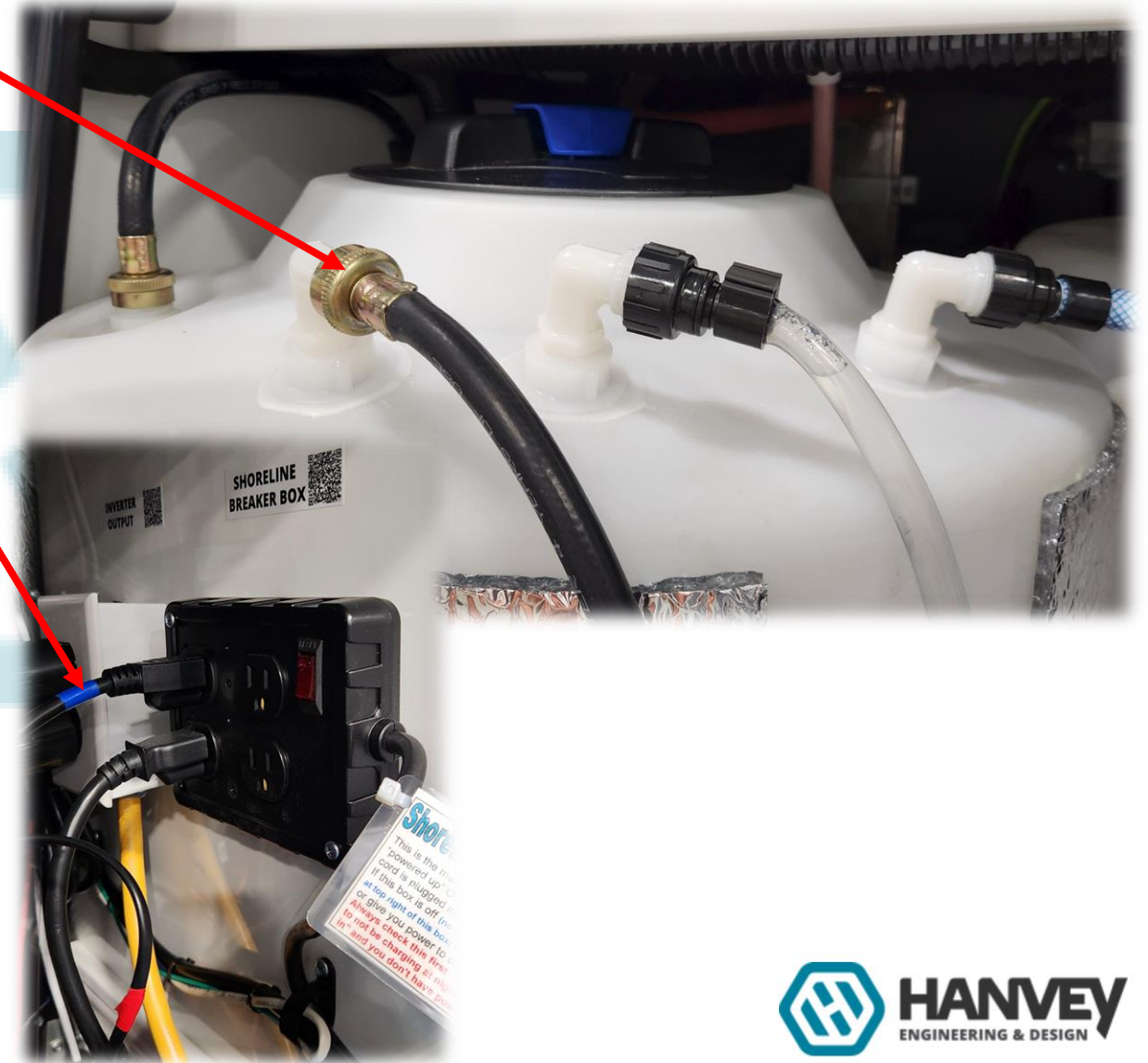


# Fresh Water Tank Fill

At the end of each workday, attach the freshwater fill hose to your home garden hose, and fill your freshwater tank.

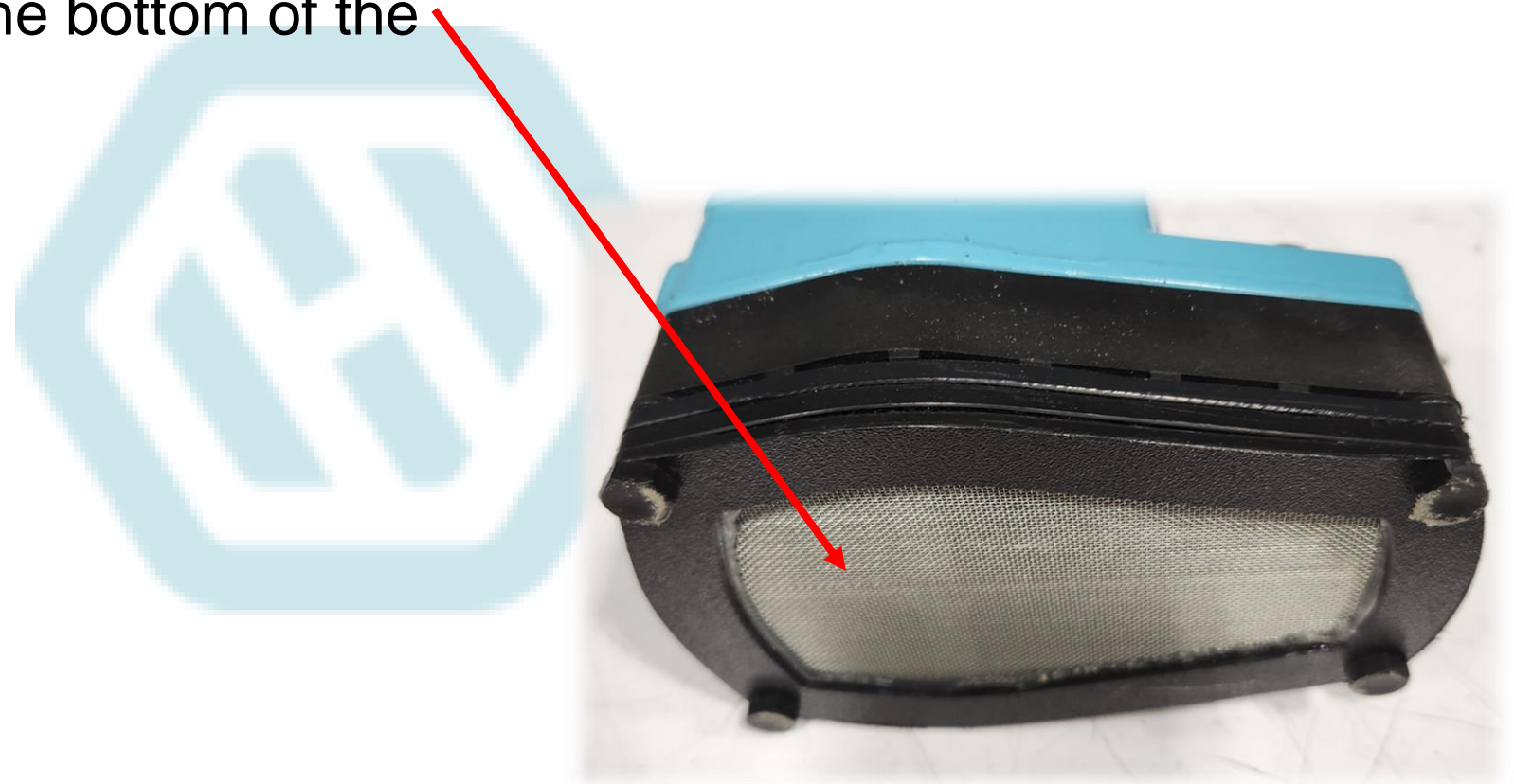
Once filled, ensure you only have the blue-taped cord plugged into the shoreline breaker box. If the red taped cord is plugged into the shoreline breaker box, unplug it before you plug the van into the shoreline.

Plug the van into the shoreline and let the water circulate for about 2 minutes then plug the red cord into the shoreline breaker box to start warming the water in the tank.



# Bathing Beauty Maintenance

Remove any dirt/hair from the bottom of the screen daily.



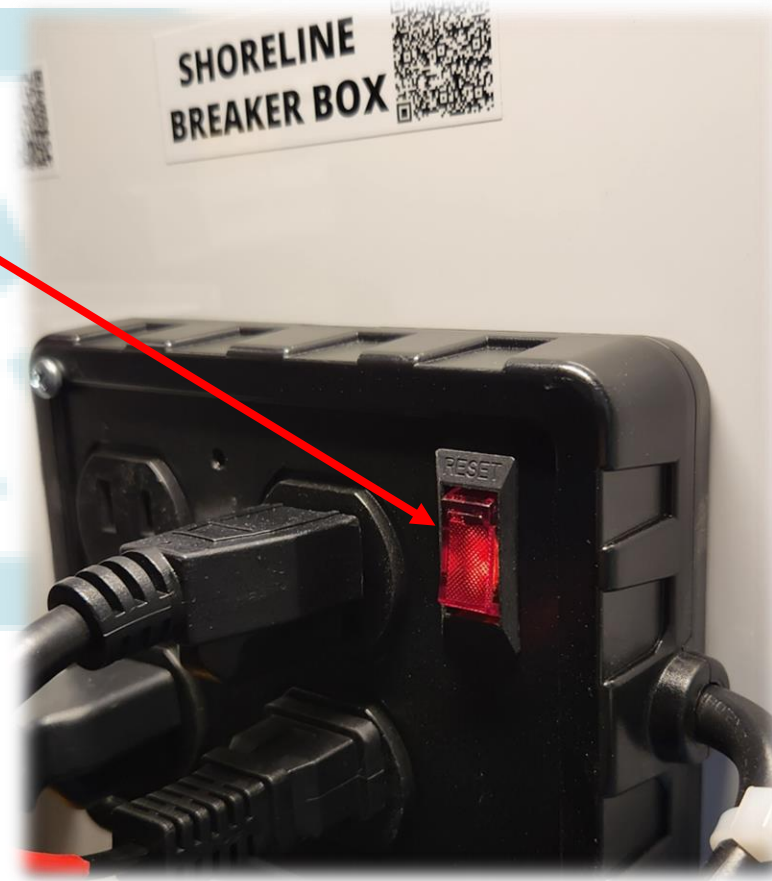


# Shoreline Charging/Inspect Shoreline Breaker Box

When plugging the van into the shoreline, it is advised to open the passenger rear door on the van and ensure the shoreline breaker box is illuminated.

10 seconds after plugging into the shoreline, you should hear the inverter “click”. This “click” is the charger in the inverter turning on.

If the shoreline breaker box trips, try resetting it, and if continues to trip contact tech support.



# Taking Care of Your Van

**A CLEAN VAN IS A HAPPY VAN!!!!**

**Keep your van clean and do your maintenance.**





# Weekly Maintenance

# Evaporator Maintenance

The silver filter on the rear of the unit needs to be cleaned weekly. Remove the filter by pulling down the two tabs.

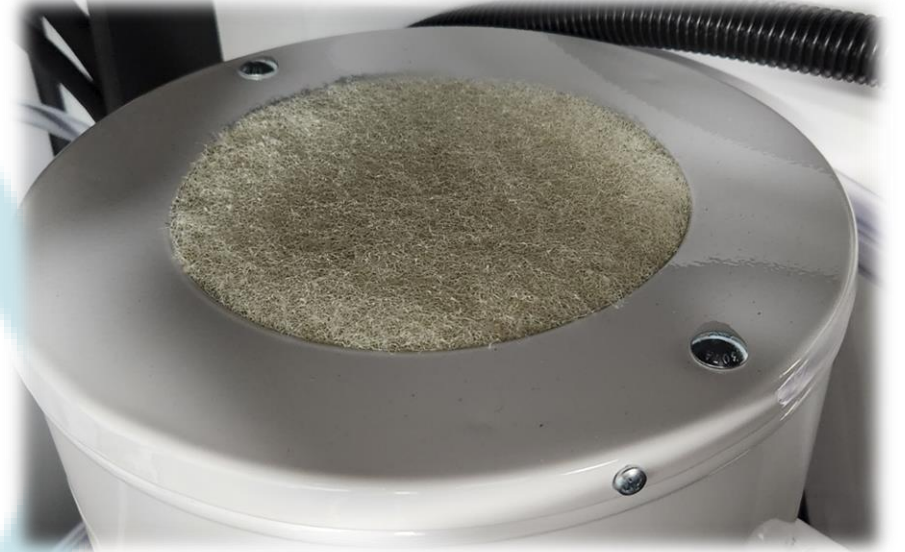
- Remove the filter and spray air/water through the filter to clean the filter out.
- While the filter is off the unit, from the front side of the Air Conditioner take your dryer hose and blow air into the vents to blow out loose hair.



# High-Velocity Force Dryer Maintenance

The dryer has a top and bottom filter that needs to be vacuumed off weekly.

**\*\*\*DO NOT REMOVE THE FILTERS\*\*\***



# HairVac Maintenance

- The HairVac canister should be emptied every other day to weekly depending on usage.
  - To empty, losing the taxi board release knob.
  - Remove the extension hose from the HairVac.
  - Swing the HairVac out past the battery box.
  - Place a trash can or trash bag underneath the HairVac.
  - Release the HairVac latch and let the hair fall into the trash can/bag.





# Monthly Maintenance

# Xantrex Inverter Maintenance

The blue filter on the Inverter needs to be removed monthly and cleaned. To clean, use a vacuum and vacuum well. you can wash with mild soap and water or vacuum/blow the filter clean.





# Evaporator Maintenance

The coils behind the silver filter needs to be cleaned monthly or seasonally.

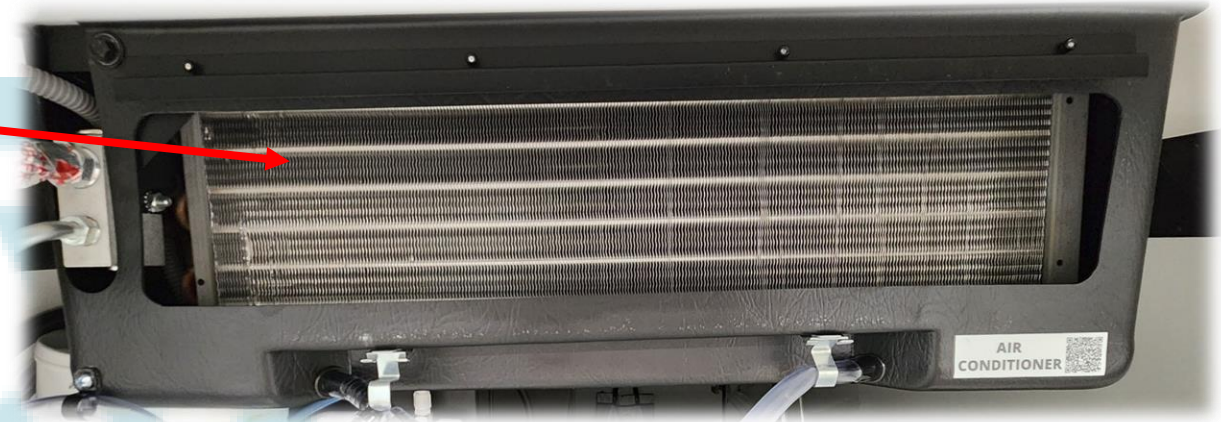
- Remove the filter by pulling down the two tabs.



# Evaporator Maintenance

Once you have the filter removed and the unit blown out.

- Spray the coils with Windex.
- Let the Windex stay on the coils for 5 minutes.
- With a cloth, wipe from top to bottom, do not wipe side to side.
- Once the entire coil has been wiped down, wipe across the bottom of the cover/condensation pan to prevent clogging of the condensation tube.
- It is not recommended to use a force dryer to blow air into the rear of the coil fins as it could push hair/dander further into the fins and become impacted restricting airflow and reducing cooling performance.



# Condensing Fans Maintenance

The blue filter on the Condensing fans underneath the van needs to be cleaned monthly. Depending on your model year of the van this filter may not be present.

Pull the filter toward the end of the filter that has the zip ties.

Use a water hose and rinse or a shop vac to vacuum clean.



# Condensing Fans Maintenance

Once the blue filter is removed (if your van has the filter), with a garden hose, rinse the metal coils off on top of the Condensing fans.



# Bathing Beauty Maintenance

Remove any dirt/hair from the bottom of the screen.

Remove the screen assembly with a 7/16" socket and with a soft bristle brush scrub everything clean on both sides of the screen.

Caution: Be mindful of the silicone gasket and avoid damaging it. If this is or lost please, contact support to get this repaired.



# Fluff Dryer Maintenance

The dryer has a small blue filter on the rear of the dryer at the air intake. Pull this filter out of the unit and clean with hot soapy water monthly.

If the filter no longer wants to stay in place get with support about a replacement.

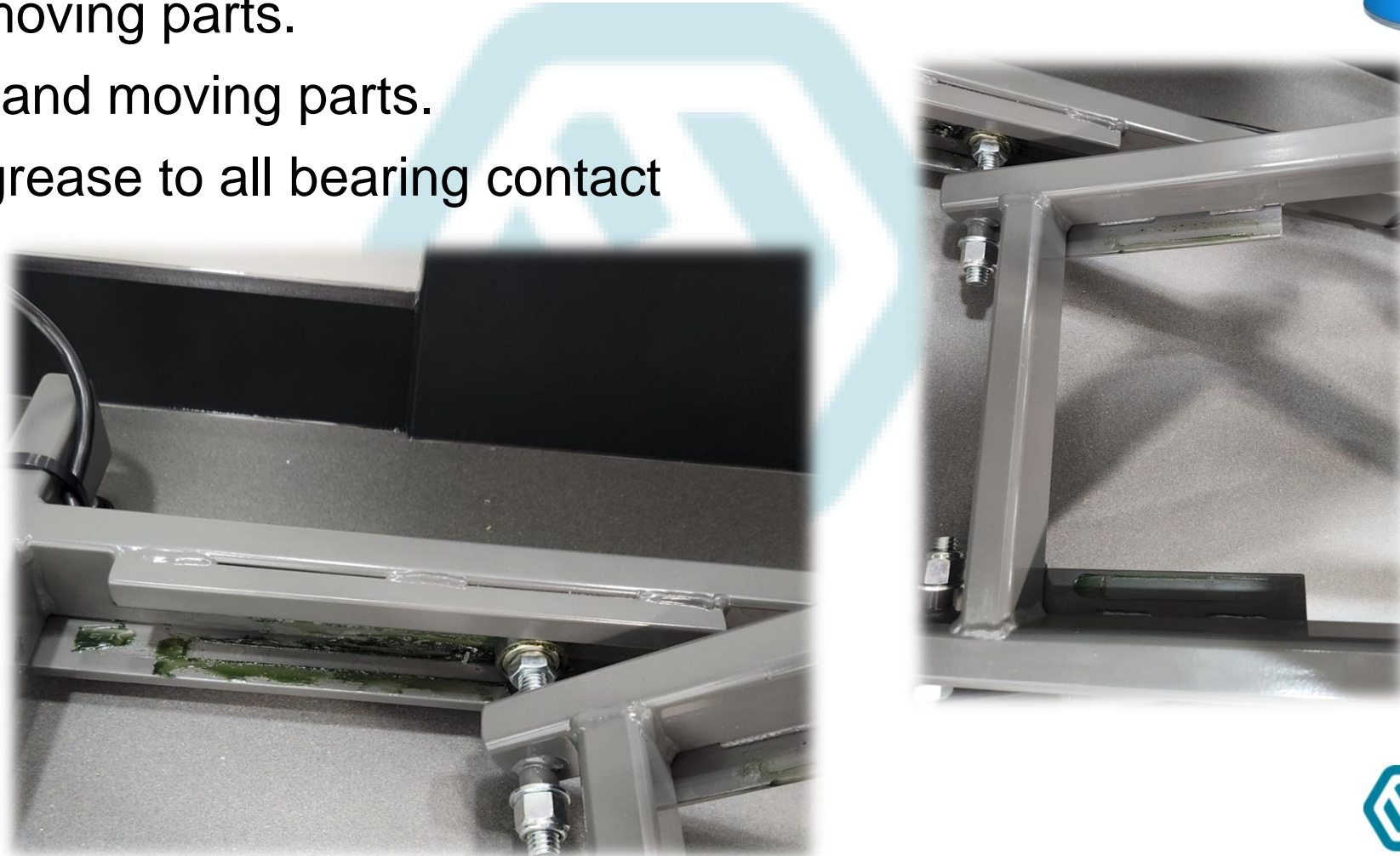
Using the drier without a filter will cause permanent damage and premature failure.



# Grooming Table Maintenance

Monthly maintenance is required on your grooming table.

- Inspect all moving parts.
- Clean table and moving parts.
- Apply axle grease to all bearing contact locations.



# Table Maintenance

- Inspect all electrical table wiring for exposed copper wires or crushed wiring.
- Inspect and clean the actuator as needed.
- Inspect the screws holding the tabletop to the frame.





# Roof Vents Maintenance

- Remove the screens from both vents and clean them monthly.
- Wipe down the fan blades leading edge monthly.
- Inspect the dome for cracks. If cracks are found get with support for a replacement. Cracked dome covers are the primary factor for leaking vents.



# 45-gallon Waste Tank Maintenance

Remove the tank monthly to clean the inside with a pressure washer or chlorine/bleach. Add the chlorine/bleach to the top of the tank and never pour down the tub drain. Chlorine/bleach poured in the tub will damage the drain pump.

# Lead Acid Battery Bank Maintenance

Battery maintenance is important to extend the life of the batteries.

Monthly - check all the connections on the copper bus bars and the battery cable for loose connections and clean any corrosion that has built up on the connections.

A good test that can be performed monthly on the batteries to find loose connections, is to run both dryers in the van for 20 minutes. Then lightly touch each battery connection for hot connections.



# Lead Acid Battery Bank Maintenance



Check the water level of each battery monthly. If, you are having to add more than one gallon of water every month, you should start checking/adding water weekly and expect to replace your batteries soon.

See the Electrical System PDF for instructions on adding water.

If you let the batteries run dry, this will shorten the life of the batteries.

# HairVac Maintenance

- Your HairVac has a Hepa filter installed inside the HairVac. This filter should stay installed and using a shop vac, vacuum this filter every month.
- Each time you open the HairVac, wipe down the lid gasket and remove any hair or nail clippings or debris that may be stuck to the gasket.
- Failure to keep gasket free from debris is the #1 reason for suction loss.

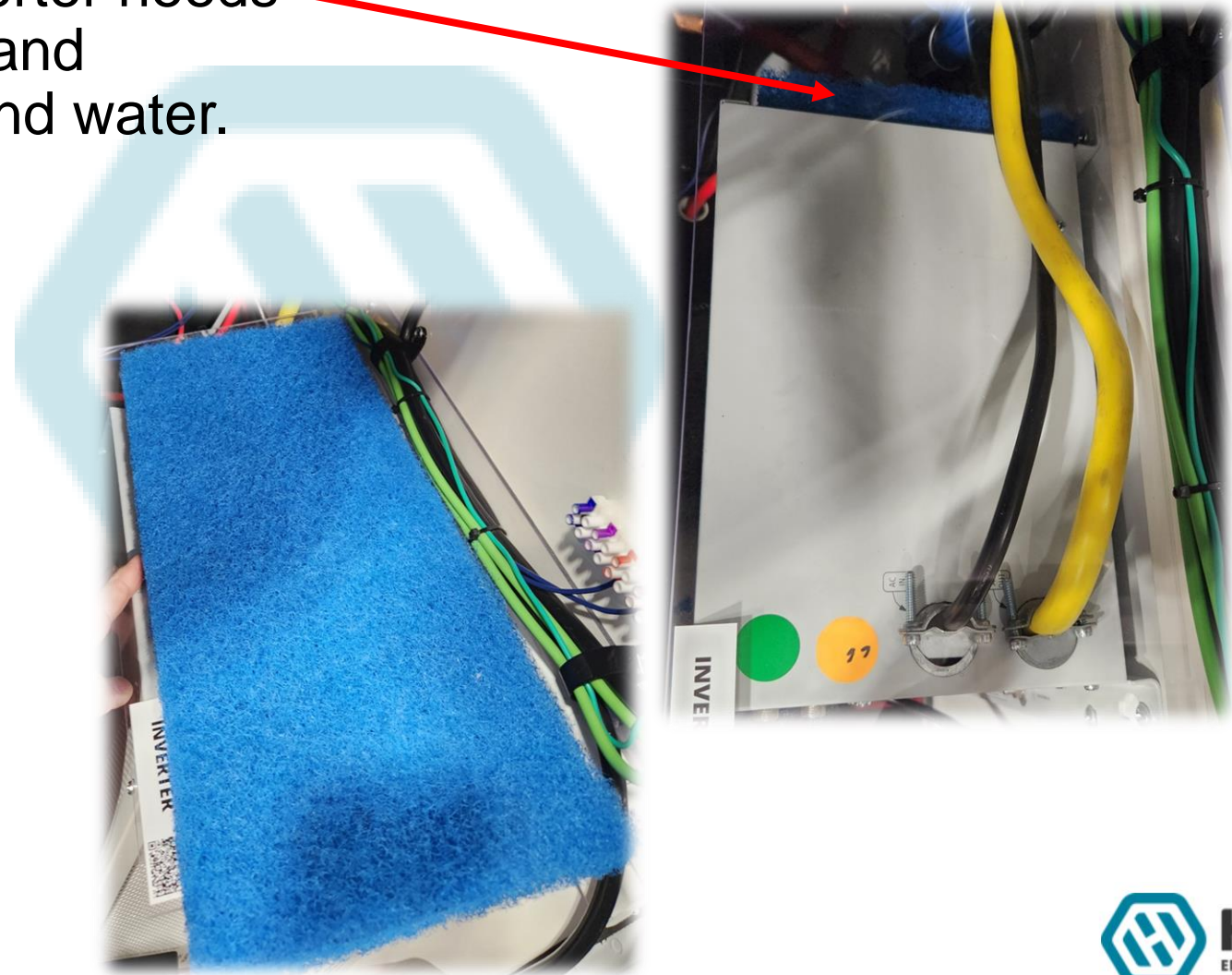




# Quarterly Maintenance

# Xantrex Inverter Maintenance

The blue filter on the Inverter needs to be removed quarterly and washed with mild soap and water.



# 65-gallon Freshwater Tank Maintenance

The Freshwater tank should be removed from the van to keep the space heater's filter clean and remove excess hair accumulation, every 3 months.

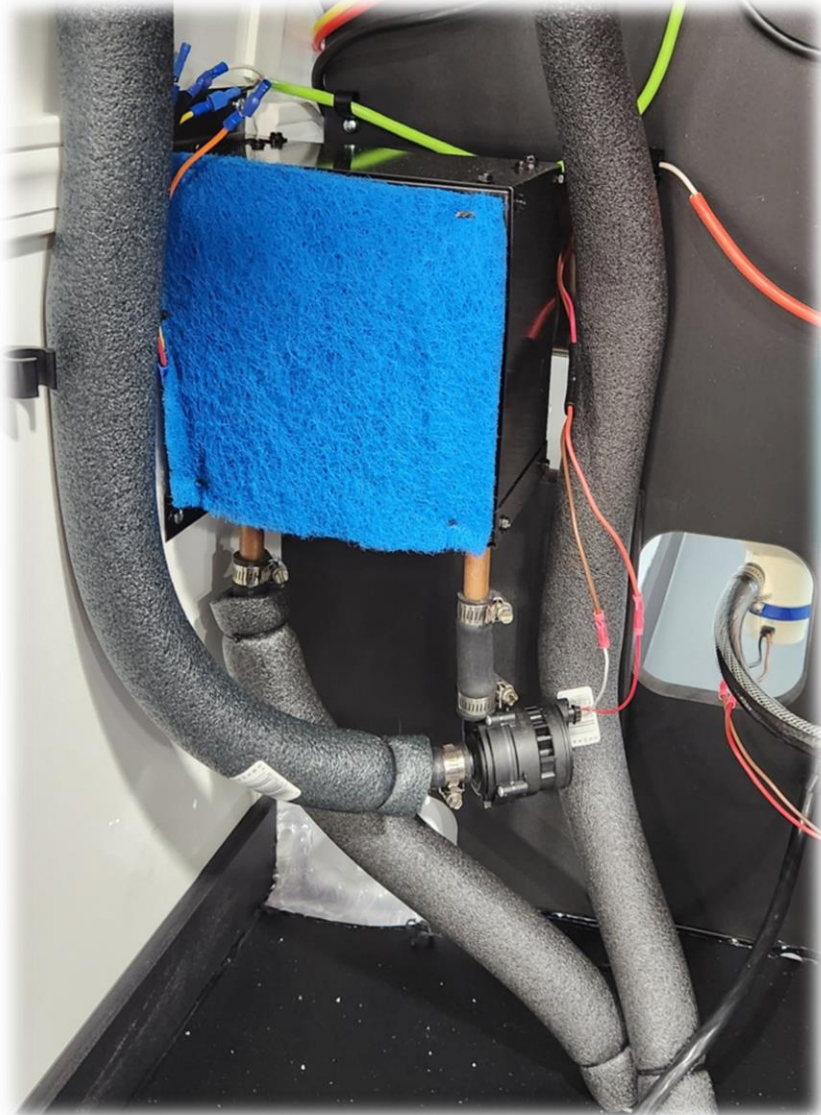
If using well water in your freshwater tank you should clean the sediments out that collect in the bottom of the tank.

Clean the rear of the van behind the Freshwater tank. The best time to do this is when you remove the tank for heater/coolant maintenance.



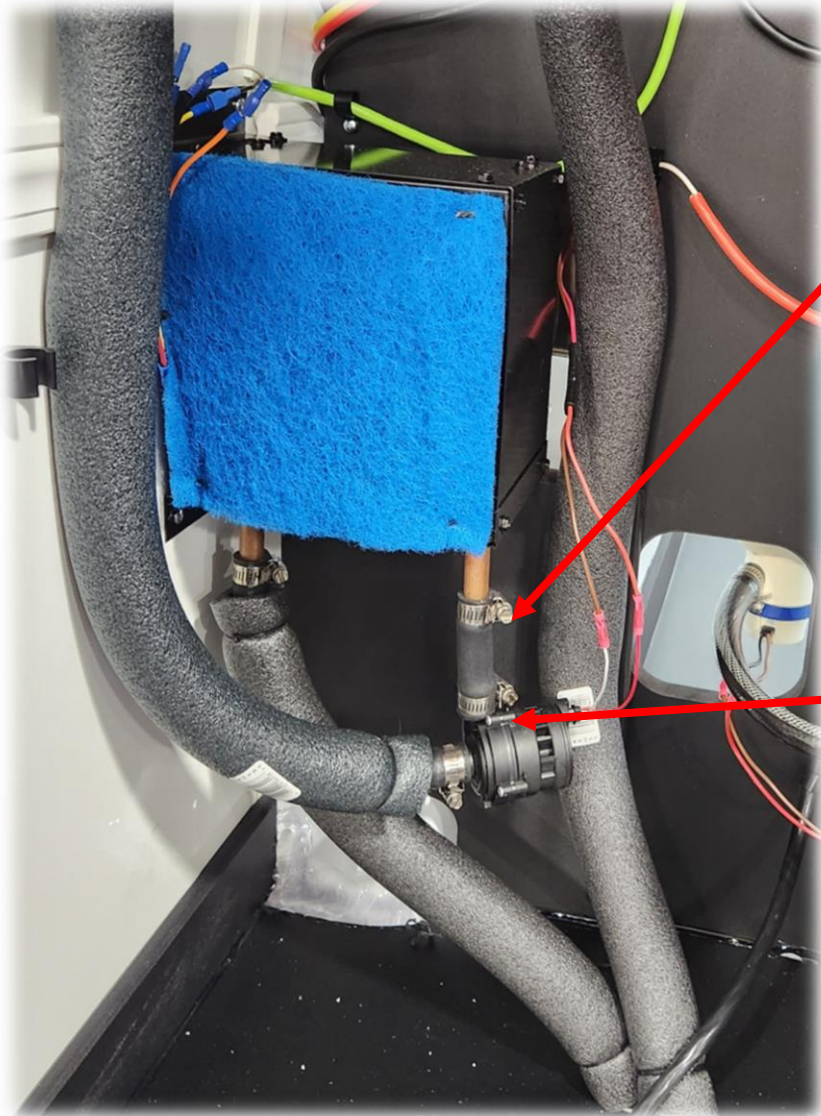


# Spacer Heating Maintenance



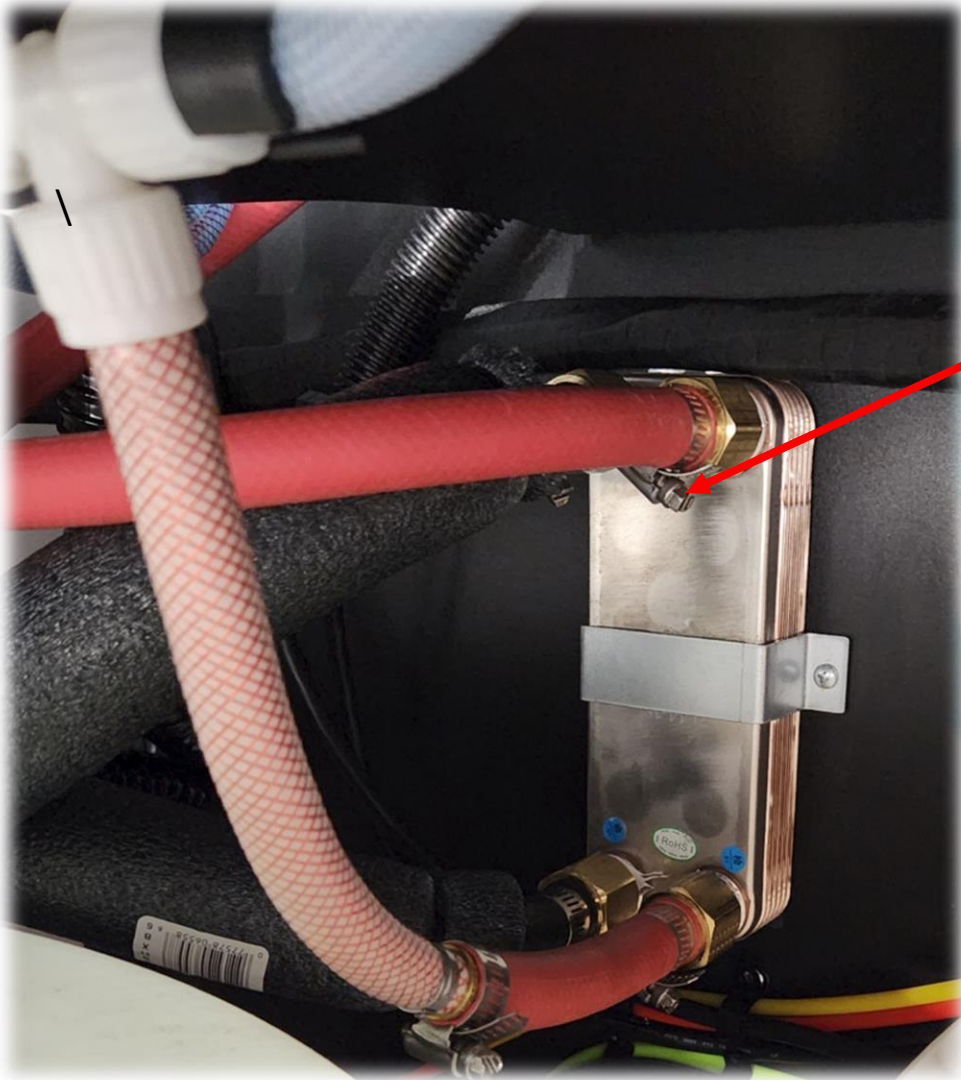
- The Space heater has a blue filter that needs to be cleaned monthly.
- The best time to clean this filter is when you are doing monthly maintenance on the freshwater tank and waste tank.
- Take a picture of how the connections are on both tanks. This will help you when reconnecting the tanks. Remove the tanks and clean the filter.
- Clean the filter with a shop vac. Avoid removal unless necessary.

# Coolant Hose Connection Maintenance



- Check all coolant connections when the tanks are removed.
- Any place you see a hose clamp, use a flat-headed screwdriver and tighten all hose clamps.
- Dried, leaking coolant will appear white and chalky. These areas are leaking and need to be tighten.
- With a Torque(T15) screwdriver, tighten all these screws on the boost pump.

# Heat Exchanger Maintenance



- With the tanks out, check all four hose clamp connections on the Heat Exchanger monthly.
- Using a flat-headed screwdriver, tighten all hose clamps if any are found to be leaking.